



**ELEVEN**  
ANGLING



---

**GLOBAL ANGLING DESTINATIONS**

CHILE | NEW ZEALAND | COLORADO | ICELAND





---

*Discover the world's most sought-after angling destinations with Eleven®.*

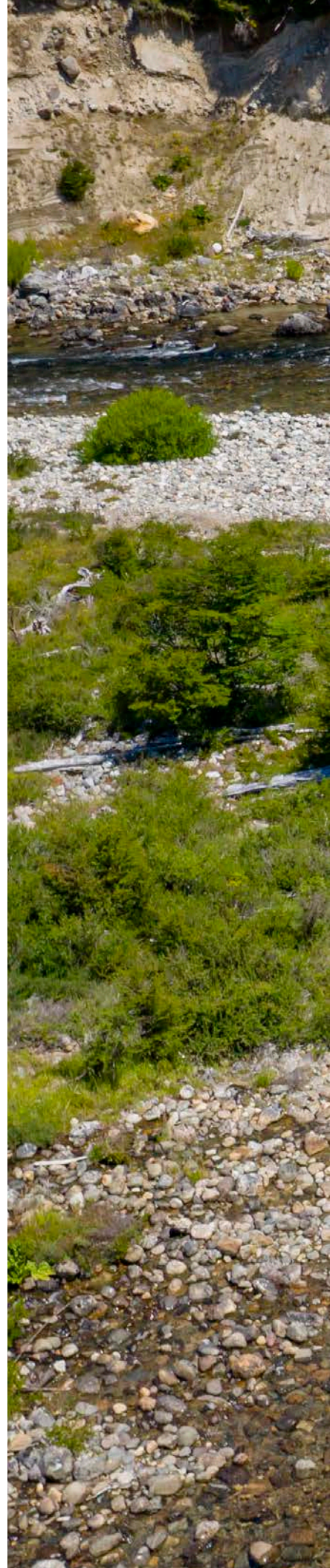
From the glacier-carved valleys in Iceland and the countless trout streams in Colorado to the globally renowned fisheries of New Zealand and Chile, Eleven's global portfolio of angling experiences is second to none. We've scoured the globe for unique places that deliver the most riveting fly fishing opportunities, then created the kind of intricately planned itineraries and well-appointed lodging that distinguish us from other leaders in the angling world.

In these far-flung lodges, chalets, and cabins, we customize adventures that revolve around the fishing, yet all the while are characterized by personalized touches of service and detail. Expect chef-prepared meals at riverside outposts, comfort-forward accommodations saturated in cultural authenticity, and guided activities tailor-made for those who prefer to explore the outdoors by foot and bike.

Our guides are the cornerstone of your time with us—count on them to know every riffle, run, and pool in the water; every trail and lookout point on land; and every insider tip for experiencing the area like a long-time local. No matter your skill level, our Experience Team lives and breathes to make your time on and off the water truly unforgettable.

Headquartered in Crested Butte, Colorado, Eleven represents a new standard in experiential travel. We quench a thirst for unprecedented adventures, authentic connections with down-to-earth guides, and deeply personalized holidays for the discerning traveler.

**WWW.ELEVENANGLING.COM**















## CONTENTS

---

6	WHY FISH WITH ELEVEN
8	DESTINATION MAP
12	CHILE   ELEVEN RIO PALENA LODGE
22	CHILE   ELEVEN MARTÍN PESCADOR
32	NEW ZEALAND   ELEVEN CEDAR LODGE
42	COLORADO   ELEVEN TAYLOR RIVER LODGE
52	ICELAND   ELEVEN DEPLAR FARM
62	ICELAND   ELEVEN HÖLKNÁ CABINS





## WHY FISH WITH ELEVEN

---

### *Custom-Tailored Adventures*

We believe that your trip should be about you. When you fish with us, your days are personalized to your preferences, with no stale itineraries or fixed formulas. Whether you're a die-hard angler who wants to chase fish all day, or you're simply looking to get off the grid, turn off your phone, and get on the water to practice your cast, we've got you covered. Have friends and family in tow? We'll curate lifetime experiences for each of you, sending your whole group home with truly irreplaceable memories.

### *Off-the-Beaten-Path Locations*

Eleven takes you to incredibly distinct destinations that have yet to be explored, with a strong connection to their environment and landscape. The access to unpressured water is unparalleled, while the lodging you'll come home to at the end of the day is equally exceptional. This emphasis on setting sets the tone for the entire experience—don't be surprised should you find yourself fishing, exploring, and dining with no one else in sight.

### *'Best Day Ever' Policy*

We've spent a great deal of time perfecting the angling programs, yes, but we don't stop there. It's not just about landing the big one—it's about celebrating your catch with a gourmet riverside lunch surrounded by best friends. It's about swapping fishing stories with your family in a heated pool beneath the stars. We believe the connections our guests foster among themselves and with nature are the most valuable commodities in the world, so no matter what, rain or shine, we'll make sure you don't go home before saying, "That was the best day ever."





## ELEVEN GUIDE TEAM

*“We hear it over and over again from guests—‘It’s the guides who truly make our experience. They don’t just know what they’re doing, they love what they’re doing.’”*

At the core of the experience is our Guide Team. These highly trained angling and adventure guides not only represent the best in their fields, but they also exude an infectious passion for the art of fly fishing. By blending their keen ability to assess your goals and styles with their expert knowledge of the local fisheries, our guides deliver highly personalized days designed to grow your abilities, exceed your expectations, and seamlessly integrate your time on the water into the overall Eleven experience.



## LODGE TIERS

Two lodge categories designed to offer a tailored range of distinct experiences



### *Eleven Experience Lodges*

Our flagship offerings that deliver the highest level of amenities and experiences

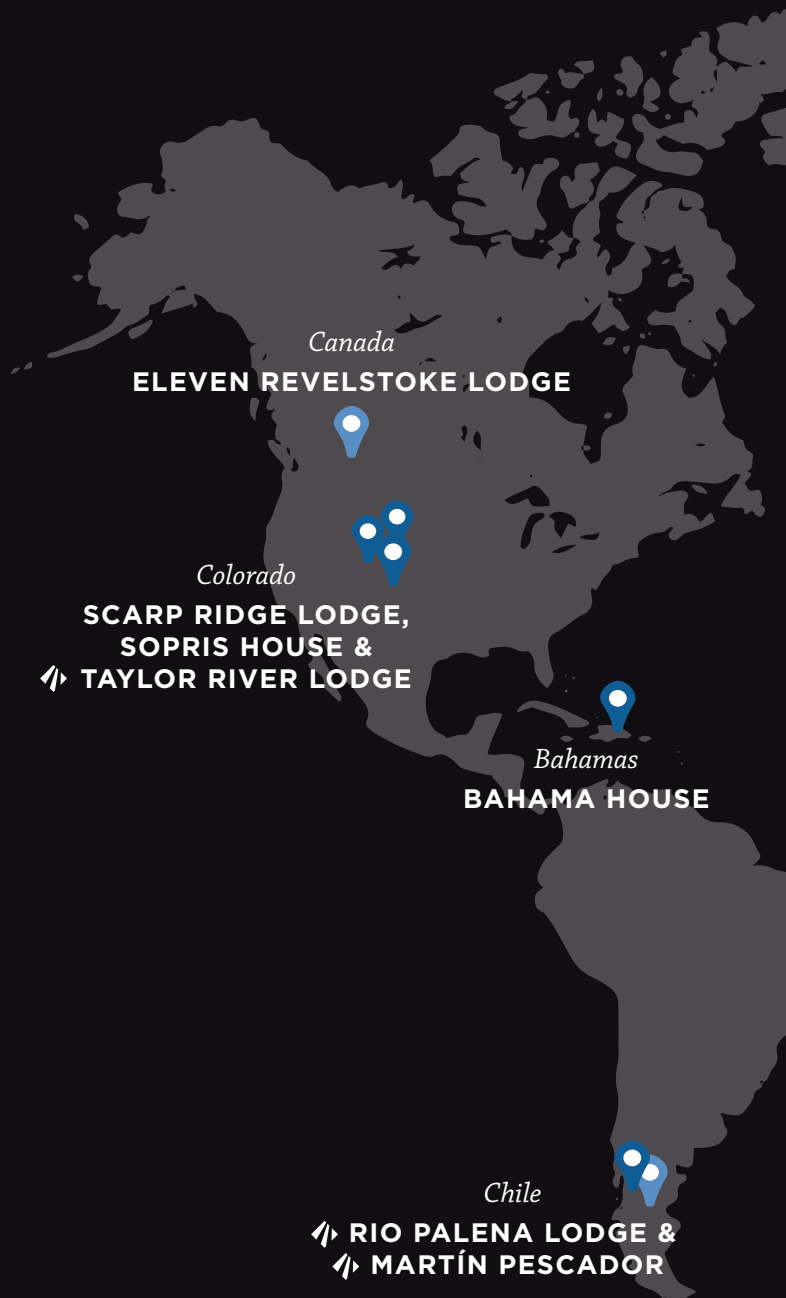


### *Eleven Adventure Lodges*

Our activity-focused lodges geared towards the core outdoor enthusiast

## 🦈 ANGLING DESTINATIONS

A blend of Experience and Adventure Lodges focused on angling







*Iceland*

▧ DEPLAR FARM  
▧ HÖLKNÁ CABINS

*France*

CHALET PELERIN &  
CHALET HIBOU

*New Zealand*

▧ CEDAR LODGE





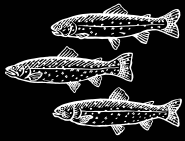




---

## ANGLING DESTINATIONS





# ELEVEN RIO PALENA LODGE

PATAGONIA, CHILE

*A riverside lodge  
set in the wild  
of Patagonia  
with diverse  
trout fishing  
opportunities.*



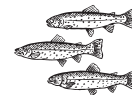












## EXPERIENCE OVERVIEW

Rio Palena Lodge, situated on the banks of its namesake river, delivers a multifaceted angling experience in the heart of Chilean Patagonia. For newer anglers, let our seasoned guides give you a casting crash course before you try your hand at landing a trout on the Rio Palena, just outside the lodge. For a more dynamic experience, head to Lago Yelcho for exciting dry dragonfly fishing. Those with a taste for thrill can load up in the heli to explore the higher alpine streams and lakes. Extended river sections make for action-packed half- and full-day floats, while rafts and jet boats deliver next-level accessibility. Whether you're aggressively targeting the region's trophy browns or enjoying a more laid-back approach, the variety of angling experiences at Rio Palena Lodge is unparalleled, and our guides know exactly how to tailor your days to blow your time here out of the water.

Looking for other types of adventure? Rio Palena Lodge has no shortage of lifetime experiences for everyone. Try trekking up a just-discovered glacier, heli-hiking to some of the world's most striking views, rafting down world-renowned rapids on the Futaleufú, or simply enjoying the breathtaking scenery from the lodge's wood-fired hot tub with a Pisco Sour in hand.

## SEASON

December through March

## GUEST PROFILE

Anglers and adventurers of all abilities, including couples, families, and corporate groups.

## BOOKING TIPS

Our awe-inspiring slice of Patagonia is well off the beaten path, so let us help you plan your travel, including air transportation and ground transfers. For those looking to explore more of the region's renowned fishing, we can assist you in extending your itinerary to experience Martín Pescador, which boasts a multi-lodge angling sequence situated just a few hours away. Our Experience Team is here to craft a personalized itinerary no matter your inclinations, and the more lead time we have to customize your trip, the more ideal your experience will be!





## ABOUT THE PROPERTY

### *Eleven Rio Palena Lodge*

Rio Palena Lodge, hidden alongside the Rio Palena in Patagonia's Lakes District, is the ultimate adventure escape. Saturated with a culturally forward design and understated touches of elegance, the lodge's seven en suite bedrooms are accompanied by the common spaces' native stone fireplaces, outdoor lounges, and wood-fired hot tubs. Defined by a distinct blend of indigenous Mapuche textiles and heavy wooden accents, the lodge is dramatized with colossal windows that envelop guests in a powerful sense of place.

### ELEVEN EXPERIENCE LODGE

*A flagship lodge delivering the highest level of amenities and experiences*

---

Riverfront access allows anglers unlimited hours of chasing trout, while proximity to nature trails, waterfall hikes, and whitewater rafting launches guests right into the heart of adventure. Outstanding cuisine rooted in Chile's rich culinary tradition is at the core of the lodge's cultural authenticity, while the people—from the chefs and mixologists to the guides and planners—infuse a warm dose of Chilean hospitality and connection that's hard to leave and even harder to forget.





## PROPERTY DETAILS

Max capacity: 16 people

Seven guest suites with en suite bathrooms

- Three with king beds
- Two with queen beds
- Two adaptable rooms situated with either king or twin beds

13-acre property grounds

## AMENITIES

Common spaces include: living room, dining room, bar/game room, and outdoor decks facing the river

Two wood-fired hot tubs and a sauna

Gear and wader drying room with guest lockers





## ANGLING Q+A

### *What can I look forward to at Rio Palena Lodge?*

Not only does the lodge sit on a wonderful stretch of home water, but there are also various full-day sections right out our back door. For beginners and experienced anglers alike, fishing large dries can produce explosive strikes. The long riffles here are ideal for pulling over and wading, and streamer aficionados will find the Palena to be one of the best rivers for big browns.

### *How big are the trout?*

The region's trout average 14-18 inches, with fish between 18-22 inches caught by anglers daily. Hefty prizes of 23+-inch fish can be a weekly occurrence.

### *What rivers will I have access to?*

In addition to the Rio Palena, you'll float fish the upper and lower Futaleufú, with the lower stretch emptying into Lago Yelcho. Jet boats are used in Lago Yelcho to whisk you to reed-laden bays and inlets to cast dragonfly, beetle patterns,

and nymphs to cruising trout that sometimes sip and other times crush your offering. We also fish the Rio Yelcho for large-sized rainbow and brown trout, along with remote waters only accessible by helicopter.

### *How do we access remote areas?*

We offer unique helicopter access to rivers and lakes set in environments that will take your breath away while hybrid power drifters, jet boats, rafts and catarafts take anglers into rarely fished rivers. The heli-access not only removes essentially any boundaries that would otherwise limit your access, but also makes for a breathtaking immersion into the pristine wilderness areas for which Patagonia is so well known.

### *What gear does Eleven provide?*

Top-of-the-line fishing rods are 5-7-weights with floating and sink-tip lines. Eleven guides will have all of your equipment: rods, reels, lines, leaders, flies, waders, and wading shoes, but you're invited to bring your own gear, especially flies, if you prefer! We love trying new patterns and always welcome integrating your favorites into our go-tos.









## A DAY IN THE LIFE

*Here's an idea of what your time at Rio Palena Lodge might look like, though your itinerary is likely to vary based on your customized specifications and trip length.*

One of the best parts about Rio Palena Lodge is that you can get a line in the water just about as soon as you arrive. Many love to spend a few hours in the back lawn walking and wading the Rio Palena or perfecting their cast on the pond before settling into the lodge for après and a citrusy Chilean favorite, the Pisco Sour. Fine local wines and a chef-prepared dinner follow, as well as a bonfire under the stars before you turn into your richly layered, wood-accented suite.

Each day thereafter, the waters are all yours to explore. Our guides will





take you where conditions are best, in line with your preferred style and ability level. From the beginner-friendly Malito to the heli-ride to the Upper Tigre, the opportunities are in endless supply. Expect to target big browns, rainbows, and brook trout in all their variety, and don't miss the chance to hop in the boats for a full-day float starting from the lodge or our stunning outpost, "Futa Camp," where riverside lunches are served al fresco.

Adventures of all kinds await for non-anglers and those seeking a break from the water. Hike alongside

our incredible guides through old-growth forests, view-laden bluffs, or exhilarating glacier zones—while keeping your eyes peeled for owls, hummingbirds, and Chile's national symbol, the impressive condor. Take on the Class 4 rapids of the famous Futaleufú, or paddle board down serene stretches with 360-degree views. No matter how you explore the extraordinary Patagonian landscapes, Rio Palena Lodge will greet you with a smile, a cocktail, and locally inspired hors d'oeuvres to round out a day worth writing home about.

**“  
THE VARIETY  
OF ANGLING  
EXPERIENCES AT  
RIO PALENA LODGE  
IS UNMATCHED.**







# ELEVEN MARTÍN PESCADOR

PATAGONIA, CHILE

*Multi-lodge angling  
sequence designed  
to maximize the  
avid angler's time  
on the water.*















## EXPERIENCE OVERVIEW

Simply put, Martín Pescador is the pinnacle of Patagonian angling. The program is unprecedented in its variety, unmatched in its locale, and unbeatable in its reputation. This multi-day, multi-lodge sequence is uniquely structured to host guests for a few nights at the northernmost lodge, Puerto Cardenas, followed by a few nights at La Junta, its sister lodge. This design allows anglers exceptionally extensive access to a sprawling assortment of fisheries—many of which boast world-class recognition for trophy trout.

A combination of jet boats, lake boats, and rafts get you on even the most remote, hard-to-reach water, alongside guides who are equally excited to experience both the quality and quantity of the wild trout seen in this spectacular region. Both lodges, situated directly on the water, offer immediate accessibility and the opportunity to partake in a guest favorite—watching fish rise as the sun sets from the deck, with a fine wine in hand.

### SEASON

December through March

### GUEST PROFILE

Anglers and adventurers of all abilities, including couples, families, and corporate groups.

### BOOKING TIPS

Because of this experience's set itinerary structure, making plans far in advance is highly recommended. Guests can still of course expect a high level of personalization, but we have designed this multi-stop sequence with a great deal of intention and purpose—to deliver non-stop fly fishing action. Should you and your guests like to experience more of Chile, our separate Patagonia experience at Rio Palena Lodge offers a significantly more diverse range of adventure-centric activities, making for an incredible addition to your stay at Martín Pescador just a 2-hour drive away.





## ABOUT THE PROPERTY

### *Eleven Martín Pescador*

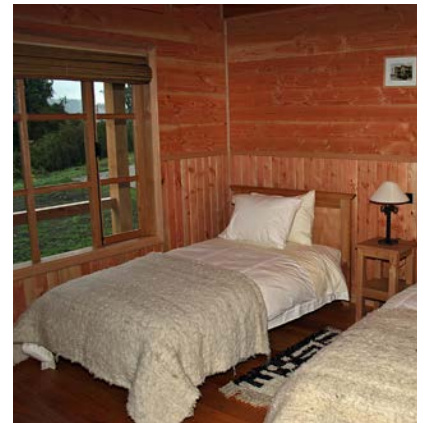
The accommodations at Martín Pescador are based out of two separate lodges that host guests during their multi-destination stay. Puerto Cardenas, nestled on a remote bend of the Rio Yelcho, consists of five guest cabins wrapped in decks that overlook the river and nearby glaciers.

Its southern counterpart, La Junta, also sits along the river, offering the serenity of an off-grid setting elevated by wraparound decks, an outdoor hot tub, and five en suite bedrooms. Both lodges feature a central dining and hang space where the richest wines, finest meats, and most exciting stories are shared nightly.

### ADVENTURE LODGE

*An activity-focused lodge geared towards the core outdoor enthusiast*





## PROPERTY DETAILS

### **Puerto Cardenas** (left page)

Five private cabins with en suite bathrooms, wood-burning stoves, and outdoor decks

A main lodge, the central gathering space where meals and cocktails are served, as well as a fully stocked bar with a deck offering stunning glacier and river views

### **La Junta** (right page)

Five double rooms configured for twin or king beds with en suite bathrooms and river views

Terrace seating on wraparound deck with breathtaking views of the Melimoyu Volcano and neighboring valley farms

Ample living room with comfortable couches, wood-burning stove, and fully stocked bar

Hot tub

Outdoor fire pit





## ANGLING Q+A

### *What makes the angling at Martín Pescador unique?*

Martín Pescador is all about the hard-to-find combination of quantity and quality. The multitude of world-class fisheries guests can enjoy, along with the size and amount of trout they'll target, is beyond compare. Our set itinerary was carefully crafted to all but eliminate drive time and maximize fishing time. The diversity of this program is remarkable, and we couldn't be more proud to continue the legacy of previous owners Frans and Anna Jansen, who infused the experience with everything an avid angler could ever imagine.

### *How big are the trout?*

The trout in this area typically measure 14-18 inches. Larger trout up to 22 inches are landed daily, and prized fish measuring 23+ inches can usually be expected weekly!

### *What rivers will I have access to?*

There are literally too many to name each and every one. However, the main systems that anglers can expect to fish are Rio and Lago Yelcho, Rio Futaleufú, Rio Palena, Rio and Lago Rosselot, Rio Figueroa, and Rio Pico, along with other private lakes and various smaller river systems.

### *How do we access remote areas?*

A huge variety of different boats, including lake boats, jet boats, rafts, and catarafts allow us to utilize the best platform for the specific fishery. Our fleet of trucks and trailers transports guests quickly to put-ins, while methods like stashing and leaving boats in certain areas allow us to access hard-to-reach stretches. Though the area is rugged, we are always willing to put our equipment to the test in order to get anglers to the best locations.









## A DAY IN THE LIFE

*Here's an idea of what your time at Martín Pescador might look like, which can be sequenced in either direction to start at either Puerto Cardenas or La Junta. Though the general itinerary design here is more concrete than that of other Eleven lodges, we take great pride in personalizing the details according to your preferences.*

When you arrive in Chilean Patagonia at our off-grid oasis, our friendly angling and lodge teams will welcome you to Puerto Cardenas, helping you settle into your accommodations and serving you a delicious lunch. Next, you'll spend a few hours getting acquainted with the surrounding water on an afternoon fishing outing. Back at the lodge, you'll be greeted with Pisco Sours, an itinerary briefing, and a chef-prepared dinner.





Each day will start with a thoughtfully crafted breakfast before you head out on a flexibly timed schedule. You'll spend most of your time on this first leg of the trip fishing Rio Yelcho and Lago Yelcho. The day isn't complete until you've made it back to the lodge's deck for a sumptuous dinner, glass of South American vino tinto, and breathtaking views.

About mid-way through your trip, you'll transfer to La Junta, though

the team will handle your logistics and luggage so that you can keep your line in the water. From this location, you'll primarily fish the remote and rugged Rio Rosselot, Rio Figueroa, and Rio Pico. The grand finale of your experience is a traditional Chilean asado, a fantastically delicious barbecue marked by the unmistakable cheer of happy anglers.

“

**SIMPLY PUT, MARTÍN PESCADOR IS THE CRÈME DE LA CRÈME OF PATAGONIAN ANGLING.**

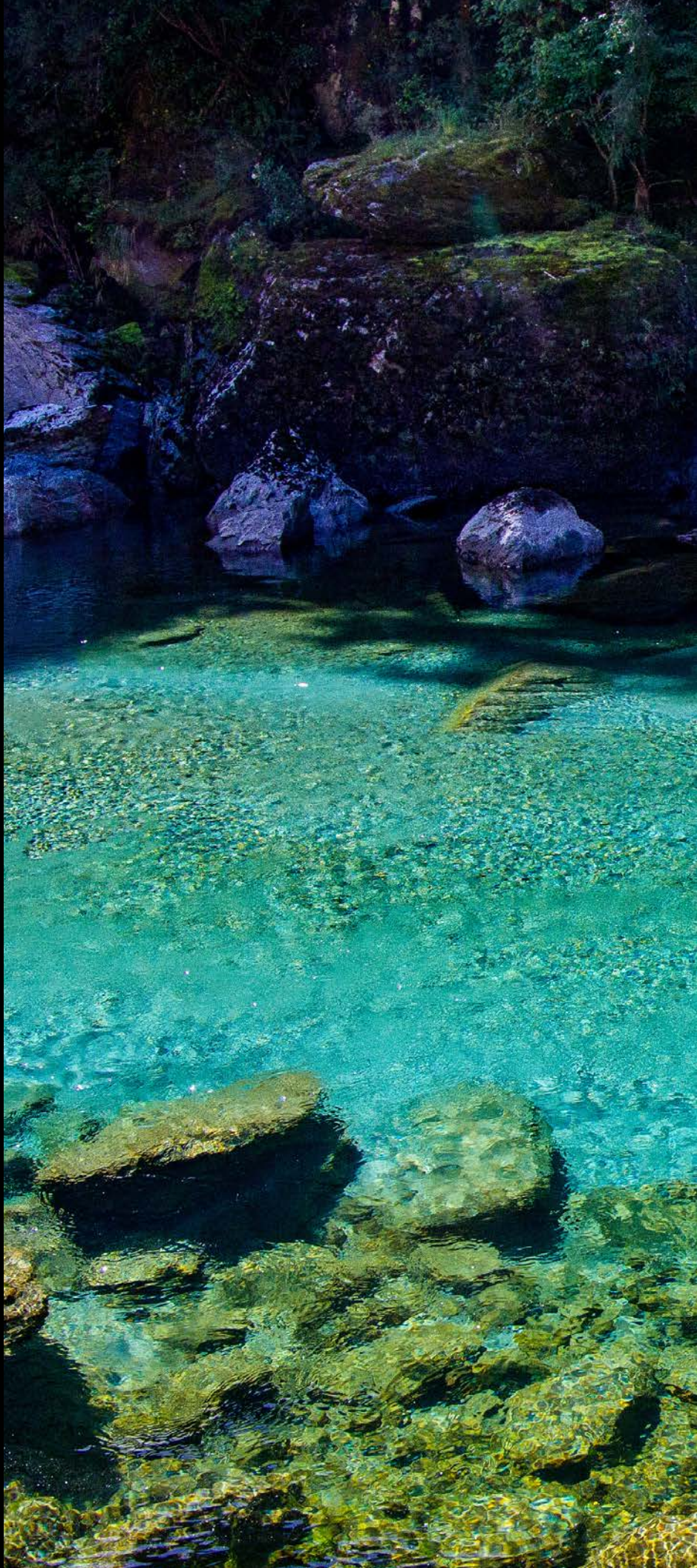




# ELEVEN CEDAR LODGE

SOUTH ISLAND, NEW ZEALAND

*A natural yet  
modern lodge  
in the world's  
trophy trout  
capital, boasting  
an exclusive heli-  
angling program.*















## EXPERIENCE OVERVIEW

Cedar Lodge's 30+-year reputation precedes it—and there's no question why. With a helicopter program that accesses some of the most remote stretches in Mount Aspiring National Park, a full slate of guided activities for every adventurer in the group, and a natural riverside lodge that greets guests with exceptional cuisine at the start and end of each day, the experience here is all-time.

The water here in the trophy trout capital of the world is gin-clear, the guides are top-notch, and the experience is all yours to personalize. The ultimate in off-grid lodging, Cedar Lodge is the only inclusive heli-angling operation in New Zealand, and all but guarantees you'll land your fill of the South Island's legendary wild trout. Wine tours, heli-hiking, and an array of view-laden adventures await as well, rounding out this lifetime experience for all who visit.

### SEASON

November through March

### GUEST PROFILE

Anglers and non-anglers, including couples, families, and corporate groups.

### BOOKING TIPS

New Zealand is the trip of a lifetime for many, and we're here to help curate an experience that goes above and beyond your expectations. Booking early is key, as we will assist with customizing every facet of your trip, including air transportation, ground transfers, fishing itineraries, and any other adventures you have in mind throughout your stay at Cedar Lodge. Want to see more of New Zealand? Tack on additional stops to your itinerary to explore more of what many regard as one of the most adventurous and fishy destinations in the world.





## ABOUT THE PROPERTY

### *Eleven Cedar Lodge*

The mighty Makarora River borders the Cedar Lodge property, immediately setting the scene for guests to enjoy the best of the South Island. Established in 1979, Cedar Lodge is neighbored by the awe-inspiring Mount Aspiring National Park, and boasts interiors to match its wild views.

#### ADVENTURE LODGE

*An activity-focused lodge geared towards the core outdoor enthusiast*

---

Four guest rooms, a lounge, and a dining area build on the beauty of the environment, while farm-to-table cuisine reflects New Zealand's bountiful ingredients. A warm sense of Kiwi hospitality underpins the atmosphere at Cedar Lodge, making your time at the lodge as special as your time angling and adventuring throughout its serene surroundings.





## PROPERTY DETAILS

Max capacity: 8 people

Four double-occupancy rooms with king or double beds and en suite bathrooms, with South Island views from each room

12-acre property

## AMENITIES

5-hole golf course

Shared lounge and dining area





## ANGLING Q+A

### *What are the guides like at Cedar Lodge?*

The guides at Cedar Lodge are local, expert anglers who have been guiding on the South Island of New Zealand and at Cedar Lodge for many years. Their expertise and command of this particular style of fly fishing is world-class.

### *Do I need to bring my own equipment?*

We provide top-of-the-line rods, reels, and all other necessary angling gear. If you have personal equipment you prefer to bring, you are more than welcome to!

### *What is the weather like?*

The weather in the seasons we operate (spring, summer, and fall) can be compared to that of the Central Oregon Coast and Nova Scotia during the same months. Situated near the 45th Parallel, the area around Cedar Lodge typically experiences cool to warm days in the early spring and fall, with warmer summer temperatures and the occasional chance of rain.

### *Will I be with other guests while I'm at the property?*

During on-property meals and any other free time at the lodge, guests can expect to be with others from different parties. It is often regarded as a highlight to get to know one another in such an extraordinary environment! That said, property buyouts are a spectacular option should guests prefer total privacy and full control of the property.









## A DAY IN THE LIFE

*Here's an idea of what your time at Cedar Lodge might look like, though your itinerary is likely to vary based on your customized specifications and trip length.*

Upon arriving at Cedar Lodge, our lovely lodge staff will greet you with a welcome tour, followed by a chef-prepared dinner paired with a fine selection of local and imported wines. Over the course of the next few days, you'll enjoy homemade breakfasts each morning before flying out at around 8:45 a.m. Flight times range from 10–40 minutes, depending on an assortment of factors that varies from guest to guest and season to season.



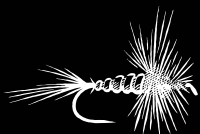


Along with considering which rivers and streams are fishing best at the time of trip, your guides will take you to the sections that excite you most—whether they be wide-open river valleys with more leisurely fishing opportunities or rugged beats that challenge even the most avid anglers. Regardless of the approach, our guides will ensure that you're practicing the most effective strategies for stalking and spotting trout.

Freshly prepared riverside lunches are accompanied by local beer and wine, and after the rest of the afternoon's fun, our helicopter will pick you up riverside to return you to the lodge, where après, dinner, and dessert await. If you or your guests prefer to pursue alternate adventures, such as visiting the region's famous wineries or heli-hiking through the stunning landscapes, your Experience Team will craft a day to suit your wildest dreams!

“  
**THE HELICOPTER  
PROGRAM ACCESSES  
SOME OF THE MOST  
REMOTE STRETCHES  
IN MT ASPIRING  
NATIONAL PARK.**





# ELEVEN TAYLOR RIVER LODGE

ALMONT, COLORADO

*A cozy collection  
of riverside cabins  
in the Rockies,  
with trout fishing  
for all levels.*















## EXPERIENCE OVERVIEW

If you want it all—a gorgeous remote setting nestled in the Rockies; a spectacular variety of rivers, lakes, ponds, streams and small creeks suitable to anglers of all ability levels; a range of adventure activities; and cozy accommodations with fine attention to service and detail, then Taylor River Lodge is just the place.

Just learning to fly fish? Our professional guides love to teach beginners on the lodge's stocked trout pond, as well as on nearby rivers and lakes. Prefer float fishing? Avid anglers can enjoy 26 miles of the Gunnison River in pursuit of browns and rainbows. Like to hike and wade? A myriad of mountain streams await nearby, where accurate casts with dries or nymphs can produce rainbows, cutthroat, and brook trout. Interested in an even more secluded fishing spot? Our home water on the Taylor provides great access to a limited number of anglers daily, along with our exclusive stretch on Tomichi Creek.

A host of hiking, biking, rafting, and on-property activities such as archery, climbing, and an extensive wellness program round out Taylor River Lodge's suite of offerings, making it an idyllic hideout for all.

## SEASON

May through October

## GUEST PROFILE

Anglers and adventurers of all abilities, including couples, families, and corporate groups.

## BOOKING TIPS

It's best to call us as far in advance as possible to book your trip, especially for high-season dates between June and September. If you're looking for specific hatches or species, we can suggest the best times, along with offering fun options for any non-angling friends or family members traveling with you. For those looking for a multi-day float trip, get in touch to learn about the Gunnison Gorge float dates, which fill up quickly due to its popularity!





## ABOUT THE PROPERTY

### *Eleven Taylor River Lodge*

#### ELEVEN EXPERIENCE LODGE

*A flagship lodge delivering the highest level of amenities and experiences*

---

Tucked away in the awe-inspiring Taylor Canyon, Taylor River Lodge prides itself on being an exclusive home away from home for the discerning traveler, welcoming guests to disconnect amidst a luxe “summer camp” ambiance. This riverside collection of private cabins is steeped in the rich history of the Western mining and ranching era, inviting guests to experience the nostalgia of another place and time.

Along with fly fishing, think hiking, river rafting, customizable spa treatments, a luxurious bath house, and farm-to-table dining. Taylor River lodge is a place for retreating, recreating, and connecting—a rare opportunity for guests to fully embrace Colorado’s off-grid mentality.





## PROPERTY DETAILS

Max capacity: 32 people

8 private cabins:

- 6 private queen bedded cabins: 3 with twin bedded lofts, 3 without
- 2 family cabins: one with 2 queen bedded suites and a lofted bunk room, the other with 2 king bedded suites and a bunk room

8-acre property grounds

## AMENITIES

Main lodge with communal dining space, bar, fireplace lounge and riverfront seating

Bathhouse with saltwater pool, hot tub, steam room, and sauna

Gym and spa facility with two treatment rooms

Game cabin with pool table, foosball, and dartboard

Private climbing wall

Outdoor BBQ space

Teepee lounge

Rainbow trout-stocked casting pond





## ANGLING Q+A

### *What type of fishing is available at Taylor River Lodge?*

One of the best parts about Taylor River Lodge is the variety of angling options you'll have. You can go on full- and half-day floats, walk and wade trips, take classes, and receive private lessons. You'll fish for rainbows, browns, cutthroat, and brookies, with an emphasis on quantity over size. Our guides are well-versed in identifying the best places to fish according to conditions, your preferences, and ability levels.

### *When do the hatches occur?*

Excellent hatches begin in late June and run through October. Mayflies, caddis, hoppers, and stoneflies emerge throughout the season to please the dry fly aficionado. Love to fish the PMDs or Green Drakes? Just ask us about peak times.

### *What if I'm just learning to fly fish?*

There's no better place than Taylor River Lodge to learn how to fly fish. Our professional guides will give you casting lessons, get you warmed up on the stocked on-property trout pond, and then take you to the nearby rivers and lakes to apply what you've learned.

### *What if I can't come during peak season?*

Early and late season offer some of the best fishing for aggressive fish with fewer people around, and it's a great time for nymphing and streamers. We will adjust our schedules to hit the water at the best times of day while providing other opportunities during the heat of the day to relieve pressure from the fishery.

### *What gear does Eleven provide?*

All necessary fishing gear is included in your trip. For fly fishing, we use mostly 8.5- to 9-foot rods in 4- to 6-weights with floating lines. Waders, wading boots, flies—we've got it all covered with industry-leading gear.









## A DAY IN THE LIFE

*Here's an idea of what your time at Taylor River Lodge might look like, though your itinerary is likely to vary based on your customized specifications and trip length.*

Step into another world as you turn off the remote county road and into our pine forested, creekside hideaway. You'll enjoy a welcome cocktail and a property tour before meeting your guides and getting fit for gear. A casting clinic is a great way to warm up and hone in your skills, then a seasonally inspired dinner will be served on our beautiful deck overlooking the river.

Each day, embark with your guides, who will have coolers with lunch and





refreshments, to the beats that are fishing best and most suitable for your angling style. Float fish the “Gunni,” fish right outside the lodge on the Taylor, head over to Tomichi Creek on Eleven’s private ranch, or hike into the high alpine in pursuit of pristine mountain streams and alpine lakes.

Mix it up with adventures that perhaps some of your guests will gravitate towards over fishing—hike the wildflower-blanketed valleys, bike through emerald green pines, or raft

down the Taylor and wave at your friends at the lodge as you pass by. It won’t be long until the kids jump into the saltwater pool concealed by a retractable floor-to-ceiling window, adjacent to the sauna and steam room perfect for rejuvenation. Whatever outdoor adventures you embark on, expect fireside après, chef-prepared dinners, and an unmatched level of personalization for all of your special moments at Taylor River Lodge!

“  
**THERE IS NO BETTER  
PLACE THAN TAYLOR  
RIVER LODGE TO LEARN  
HOW TO FLY FISH.**





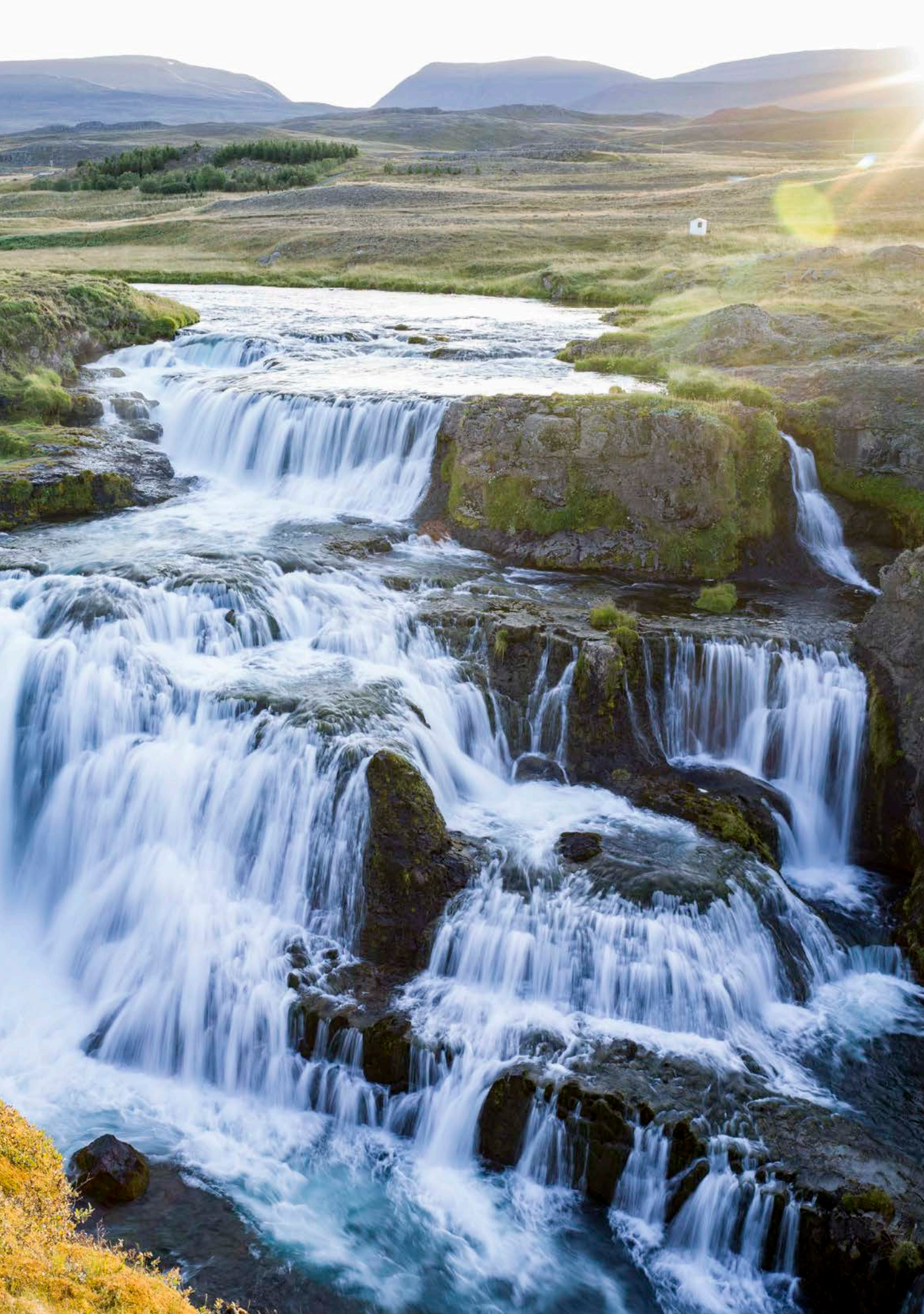
# ELEVEN DEPLAR FARM

TROLL PENINSULA, ICELAND

*Award-winning  
Nordic lodge  
with an exotic  
angling program  
that targets  
unique species.*















## EXPERIENCE OVERVIEW

Deplar Farm should top the bucket list for any adventurous anglers seeking a tremendously unique fly fishing experience paired with award-winning accommodations. A variety of rivers and lakes, a diversity of exciting species, and idyllic wading conditions make for truly amazing days on the water. You'll target Atlantic salmon, sea-run browns, wild brown trout, and aggressive Arctic char on the European "beat" system, which limits angling pressure and results in extremely productive angling.

Locally sourced cuisine prepared by artistic chefs, window-clad spaces surrounded by an incredibly striking setting, and the highest tier of intricately designed accommodations define the illustrious lodging experience at Deplar Farm. Hiking, mountain biking, horseback riding, whale watching, and an extensive wellness program highlight the non-angling activity menu, making Deplar Farm a must for guests of all inclinations!

## SEASON

June through September

## GUEST PROFILE

Anglers and adventurers of all ability levels, including couples, families, and corporate groups.

## BOOKING TIPS

Booking a year in advance is not too early if you're hoping to come for the best fishing. While salmon fishing coincides with specific rivers and beats, fishing for wild trout and char is a bit more flexible. We're here to personalize your experience, from the grandest adventures to the most minute logistical items, and getting in touch sooner rather than later only maximizes our ability to nail the details. We'll aim to reserve your fishing beats as soon as you book your stay to guarantee your experience fulfills all your aspirations during your time in Iceland.





## ABOUT THE PROPERTY

### *Eleven Deplar Farm*

Located on Iceland's Troll Peninsula, Deplar Farm is enclosed by floor-to-ceiling windows, striking its visitors with unimaginable views of peaks towering over the immaculate Fljót Valley. Once a historic sheep farm, Deplar Farm is camouflaged by a living roof and droves of roaming sheep, which largely outnumber humans in this far-off expanse.

### **ELEVEN EXPERIENCE LODGE**

*A flagship lodge delivering the highest level of amenities and experiences*

---

Permeated with notes of its rugged legacy, the space holds Icelandic literature, driftwood from the nearby sea, and stones from the Fljótaá River. Exceptional amenities like a geothermally heated open-air pool, state-of-the-art spa, and 13 en suite bedrooms captivate guests with an air of otherworldly indulgence that inspires even the most discerning travelers.





## PROPERTY DETAILS

Max capacity: 32 people

13 en suite bedrooms, including:

- 5 king bedded suites
- 4 king bedded suites with queen sleeping lofts and balconies
- 2 queen bedded suites
- 1 king bedded suite with lofted lounge
- 1 bunk room with 4 double beds and large en suite bathroom

Indoor space: 28,000 square feet

## AMENITIES

Geothermally heated indoor/outdoor pool with bar

Sauna, steam room, and indoor hot tub

Premium spa facility featuring 2 flotation tanks and 3 treatment rooms

Media room

2 heli-pads

Exclusive bar and lounge

Gym and yoga room





## ANGLING Q+A

### *What is unique about the fishing terrain in Iceland?*

To say Iceland's terrain is unique only scratches the surface of what anglers will find here! Mother Nature provides glaciers, spouting geysers, volcanoes, swirling waterfalls, and clear water rivers known worldwide for their productive fishing.

### *What is Deplar's proximity to major rivers?*

The Fljótaá River is located right outside our front door, and is a great choice if you're looking for salmon and char. The Húseyjarkvísl, an hour away, is one of those really special rivers. Anglers can fish for large Atlantic salmon as well as resident and sea-run browns. Eleven also owns cabins on the Hölná, in the remote northeast of Iceland, which can be accessed exclusively by Eleven guests.

### *What time of day can I fish?*

Fishing is typically broken into two half-day trips, but there is ample flexibility in most scenarios. Morning

trips are from 8 a.m. to 1 p.m. and afternoons are from 4 p.m. to 10 p.m. On the Húsey and the Hölná, we can fish any time of day as long as it doesn't exceed 12 hours. This gives Eleven guides and anglers a great deal of flexibility to fish at the best times in the best places in order to give guests the most incredible experience.

### *What type of gear will I be using?*

Most rods range from 6- to 8-weight, with lighter gear available for trout and char. For salmon, we generally use a single-handed 9.5-foot 8-weight or a 12-foot 8-weight two-hander. While floating lines are the norm, sink tips are also great while swinging flies.

### *What gear does Eleven provide?*

Eleven provides all gear, including rods, reels, lines, leaders, waders, wading shoes, and backpacks. While your guide will have an extensive selection of flies for every location you fish, you are welcome to bring some of your favorite dries, nymphs, and streamers.









## A DAY IN THE LIFE

*Here's an idea of what your time at Deplar Farm might look like, though your itinerary is likely to vary based on your customized specifications and trip length.*

Upon your arrival at Deplar Farm, you'll be greeted with a grand property tour followed by a locally sourced lunch. Then, you'll fish right outside the lodge on the Fljótaá for Atlantic salmon and char through the afternoon and into evening. As night falls, head back to the lodge for a cocktail in our geothermally heated outdoor pool. An exquisite chef-prepared dinner of local meat, fish, and produce will be served in the well-appointed dining area, followed by a bonfire and beverages.





The next day, after filling up on a nutrient-dense breakfast, you'll embark on an entirely new angling adventure to cast to char and trout in a nearby remote river valley. Yet another extraordinary day might include a full day of fishing on the Húseyjarkvísl River, affectionately called "the Húsey," where you'll target Atlantic salmon, sea-run browns, and wild brown trout.

Non-angling adventures are nearly countless—in fact, there are so many incredible activities to choose from that even our incredibly long summer days

barely give us enough time to see and do all that Iceland has to offer! Alongside our expert guides, you can surf, hike, bike, kayak, horseback ride, whale watch, raft, and tour Puffin Island—where 300,000 puffins can be viewed from as close as 12 feet away. Back at the lodge, challenge your loved ones to a game of laser tag or frisbee golf, then escape to our state-of-the-art spa where custom, climate-based treatments infused with Tata Harper skincare await. Suffice it to say, there's never a dull moment at Deplar Farm!

**“ THIS IS A TREMENDOUSLY  
UNIQUE FLY FISHING  
EXPERIENCE PAIRED  
WITH AWARD-WINNING  
ACCOMMODATIONS. ”**



# ELEVEN HÖLKNÁ CABINS

NORTHEASTERN ICELAND

*Self-led, off-  
grid cabin  
experience for  
the adventurous  
angler pursuing  
Atlantic salmon.*















## EXPERIENCE OVERVIEW

We've taken remote even further off the map. The two Hölkná Cabins welcome the most intrepid of adventurers whose pursuit of Atlantic salmon knows no bounds. These far-flung outposts, named after the beautiful salmon river below which they're perched, offer an abundance of fishing access with the ultimate diversity of opportunity and the slightest of pressure, delivering a prime chance to land the fish of a lifetime—one weighing over 20 pounds is the goal.

Our guides think like the salmon, giving you everything you need to catch these famous fighters. The experience here is rugged and the amenities minimalistic, inspiring guests to hone in on the reason they came—the fishing.

### SEASON

June through September

### GUEST PROFILE

Anglers of all ability levels

### BOOKING TIPS

Booking the Hölkná Cabins in combination with Deplar Farm is the ultimate way to go, and of course, booking early certainly makes the difference in reserving the best dates for fishing. With so many rivers and lakes to fish, Iceland is the ideal place to share a rod with a friend or family member. Since the Hölkná experience is particularly rugged, don't hesitate to give us a call so we can answer any questions you might have to help bring your dream fishing trip to life!





## ABOUT THE PROPERTY

### *Eleven Hölná Cabins*

The Hölná Cabins are operated as fishing lodges from July to September for anglers in search of the Atlantic Salmon. The Hölná Cabins are on the Syndra Aland land, in the northeast of Iceland. The lodging is comfortable and off-grid, equipped with kitchen supplies, two bedrooms, one bathroom with a hot shower and heated floors, wood-burning stoves, and an outdoor grill and firepit.

### ELEVEN EXPERIENCE LODGE

*A flagship lodge delivering the highest level of amenities and experiences*

---

This self-led experience is fully exclusive to Eleven guests, who will be joined solely by their angling guides, who will arrive by 4-wheel drive vehicle to transport guests to the best beats in the area. At the Hölná Cabins, guests will spend time exploring one of the wildest areas of the Nordic island for boundless adventures within a two-hour drive. The Hölná Cabins are a 20-minute drive to Thorshofn and a two-hour drive to Husavik.





## PROPERTY DETAILS

Two bedrooms: One bedroom with a king bed and one bunk room with two bunks

Common area with bathroom, living room, small bar area, wood-burning stove, grill, and firepit

## AMENITIES

Outdoor area with wood-burning stove, grill, and firepit





## ANGLING Q+A

### *What are the driving conditions like to the Hölná Cabins?*

The roads are paved all the way to the driveway entrance. As with all of Iceland, the countryside is beautiful, with streams, rolling green hills, and farms with sheep and Icelandic Ponies. Iceland drives on the right side of the road, and the driving norms are safe and courteous. Small towns you might pass through have museums, whale watching, grocery stores, gas stations, and even hamburgers and hotdogs!

### *How do we arrange meals and beverages?*

Because food and beverage service is not part of the Hölná experience, guests are encouraged to stop in at a local store and stock up on their favorites. The cabins have high-grade propane grills and kitchens, along with silverware, plates and

bowls, coffee cups, and more. It is not uncommon for the guides to join in on the grilling fun and assist with preparing the BBQ.

### *What is the fishing schedule?*

You will have long days prolonged by extended daylight hours, so sometimes it is best to have two sessions a day. We recommend a long morning session, then lunch and cabin relaxation time, followed by a long afternoon and evening session. Your guide will be sure to get you on the best named pools day after day, which exist in the dozens in this area of Iceland.

### *What casting and wading scenarios should we expect?*

Some of the pools are accessed by rather steep trails, while some are just gentle slopes. Overall, the fishing and walking is more strenuous than at other Eleven Angling destinations.

There is a variety of basic wading, but nothing too deep or swift. Casts average 25–50 feet, with very few super-long casts required, allowing just about any level of angler to enjoy this experience. We'll cast downstream with swing presentations about 95% of the time, with the occasional slight upstream cast for a deep sink presentation.

### *What flies and rigging techniques will we use?*

As an expert salmon guide and angler, your guide will show you how it's done. Some flies will skim the surface using a riffle hitch technique, some will just sink a little, and others will sink deeper. Flies range from quite small to 3.5 inches. It is quite common for an Atlantic salmon to follow the fly, then roll under the fly, or even jump over it. Your guide will often change flies more than once to finally induce a strike. The river is catch and release.









## A DAY IN THE LIFE

*Here's an idea of what your time at the Hölkná Cabins might look like, though your itinerary is likely to vary based on your customized specifications and trip length.*

Once you've arrived, stocked up on food, and organized your gear, your guide will share an overview of the many options you might explore while with us. Whatever your style and preferences—whether maximizing every second or slowing down for a more relaxed experience—your rods will be rigged and ready to go.

Driving from pool to pool takes only a few minutes, and you may encounter a covey of ptarmigan. The weather is similar to that of British Columbia





in the summer: some days are full of glorious sunshine, some partly cloudy, others breezy and rainy. It's always a good idea to stash a duffel bag in the truck with raincoats and warm hats should the weather turn.

Because Eleven Angling guests are the only ones on the river, you will have 16 kilometers of fishing all to yourself. Take it all in—the waterfalls, the perfectly blue pools, the tundra-like wildflowers, and miles and miles of uninhabited Icelandic wilderness.

**“**  
**THE HÖLKNÁ CABINS**  
**WELCOME THE MOST**  
**INTREPID OF ADVENTURERS**  
**WHOSE PURSUIT OF ATLANTIC**  
**SALMON KNOWS NO BOUNDS.**



# MORE DESTINATIONS, MORE ADVENTURES

---



*Crested Butte,  
Colorado*



## ELEVEN SOPRIS HOUSE

Four-bedroom home delivering a diversity of guided backcountry experiences.



## ELEVEN SCARP RIDGE LODGE

Refined downtown lodging with legendary cat skiing and non-stop summer activities.



*Harbour Island, The Bahamas*

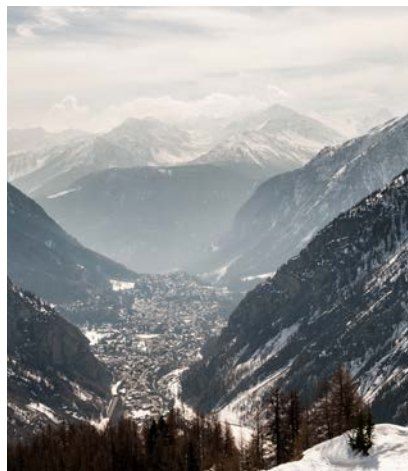


## ELEVEN BAHAMA HOUSE

A boutique home saturated in colorful frills, offering a plethora of island adventures.



In addition to these unique angling experiences, Eleven's complete lodge portfolio delivers guided adventures of all kinds in more destinations around the world.



## *Le Miroir, France*



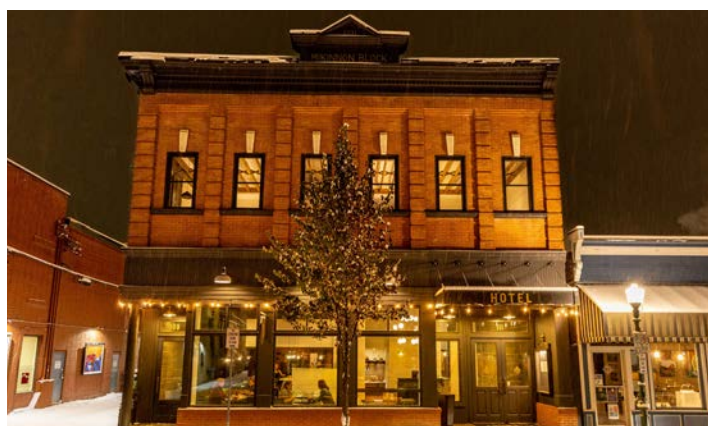
### **ELEVEN CHALET PELERIN**

Intimate chalet overlooking a charming village with guided, all-year adventures.



### **ELEVEN CHALET HIBOU**

Exquisite hilltop chalet defined by French flair and unmatched alpine access.



## *British Columbia, Canada*



### **ELEVEN REVELSTOKE LODGE**

Historic lodging with year-round adventures, highlighted by Kingfisher Heli's acclaimed heli-ski operation.













## BOOK YOUR NEXT ADVENTURE

+1 800.903.7761 TOLL-FREE

+1 970.237.5985 INTERNATIONAL

[reservations@elevenexperience.com](mailto:reservations@elevenexperience.com)

**ElevenExperience.com**

*Printed on recycled paper using bio-based inks.*

